



Etuden, Übungen und Lieder für kleine und große Saxophonisten

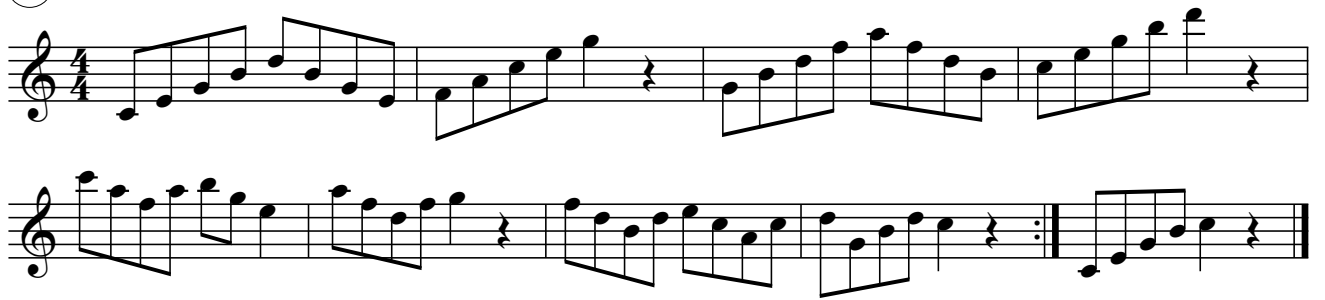
Heft #2, Mittelstufe

1. : C , 4/4 , off beats , I-IV-V, Calypso	2
2. : F , 3/4 , 4/4 , 16th. , Mazurka, Gospel.....	6
3. : G , 4/4 , 16th, Soul,Ballad.....	10
4. : Bb, 6/8 , 5/8, 5/4 , trad. Ballad, Pentatonic.....	14
5. : D , 4/4, 2/4 , triplets, call and response, Blues, Klezmer.....	18
6. : Eb, 6/8, 6/4. 12/8, Irish, Blues.....	22
7. : A. 2/4, 4/4, Bebopetude, Klezmaties.....	26
8. : Ab, 4/4, 7/8, 7/4, Blues, Largo.....	30
9. : E, 2/4, Folk, Trads.	34
10.: Db, 4/4. calypso transformes folk, Schubert.....	38
11.: B, 4/4,6/8, triplets, Schumann, trad.	42
12.: Gb, known ideas, different key	46
12a:F#, known ideas, different key	48
13.: Bedienungsanleitung / Manual	50

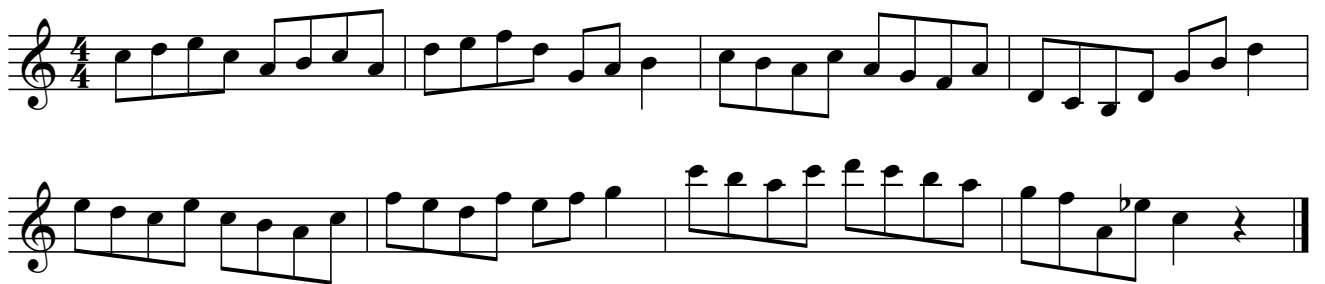
same, same, but different
(Master Han Zen)

1.

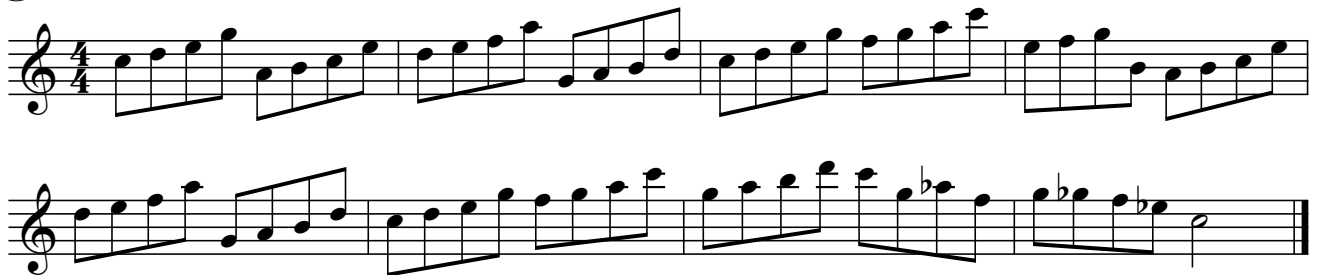
①



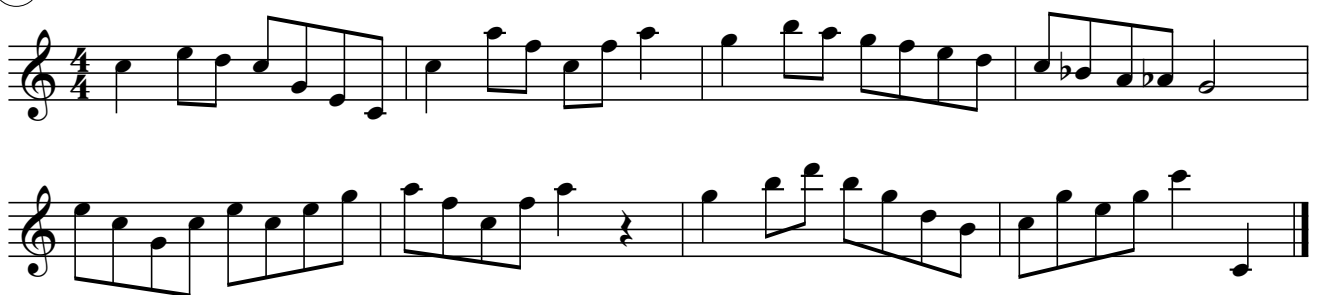
②



③



④



⑤



6

7

8

play this rhythm with chord-notes
spiele den Rhythmus mit anderen Noten aus den Akkorden

9

Matilda (Trinidad)

10

⑪

Musical notation for exercise 11, consisting of two staves in 4/4 time. The first staff contains a melody of quarter and eighth notes. The second staff contains a bass line with eighth-note patterns and rests.

⑫

Musical notation for exercise 12, consisting of two staves in 4/4 time. The first staff contains a melody with eighth notes and a sharp sign. The second staff contains a bass line with eighth-note patterns and rests.

⑬

Musical notation for exercise 13, consisting of two staves in 4/4 time. The first staff contains a melody with eighth notes and a sharp sign. The second staff contains a bass line with eighth-note patterns and rests.

⑭

Musical notation for exercise 14, consisting of two staves in 4/4 time. The first staff contains a melody with eighth notes. The second staff contains a bass line with eighth-note patterns and rests, including first and second endings.

⑮

2nd. 8va

Musical notation for exercise 15, consisting of two staves in 4/4 time. The first staff contains a melody with eighth notes. The second staff contains a bass line with eighth-note patterns and rests.

16

Chord symbols: C, Em, A, Dm, G7, C6, C7^b, C, C7, Em, A, Dm, G7, C, E7(b5), B^b, A7, Dm7, A^b7, B^bm7, G7, C, F, F[#]dim, C6, G7, C.

17

St. Sonny's

Zygar

18

Chord symbols: C6, Em7, A7, Dm7, G7, C6, C6, Em7, A7, Dm7, G7, C6, Em7(b5), B^b7, A7, Dm7, A^b7, B^bm7, G7, C7, C7/E, F6, F[#]dim7, C6/G, G7, 1. C6, 2. C.